



COMMUNITY OFFSHORE WIND

AGENCY COMMUNICATIONS PLAN

MARCH 31, 2023



Table of Contents

1	Introduction.....	1
1.1	<i>RWE Renewables and National Grid.....</i>	1
1.2	<i>Project Team.....</i>	3
1.3	<i>Authority, Regulations, and Lease Conditions.....</i>	4
1.4	<i>Guidance and Information Sources.....</i>	5
2	Agency Communication Principles and Objectives.....	6
3	Agency Communications Strategy.....	6
4	Agency Identification.....	7
4.1	<i>Federal Agencies.....</i>	8
4.1.1	Bureau of Ocean Energy Management.....	10
4.1.2	US Army Corps of Engineers.....	10
4.1.3	National Oceanic and Atmospheric Administration.....	10
4.1.4	US Environmental Protection Agency.....	11
4.1.5	US Fish and Wildlife Service.....	11
4.1.6	US Coast Guard.....	11
4.1.7	Department of Defense.....	11
4.1.8	National Parks Service.....	11
4.1.9	Federal Aviation Administration.....	11
4.1.10	Advisory Council on Historic Preservation.....	11
4.2	<i>State Agencies.....</i>	12
4.2.1	New York.....	14
4.2.2	New Jersey.....	15
5	Communications Tracking.....	15
6	Opportunities for Coordination.....	15
7	Conflict Prevention and Resolution.....	16
8	Indicators and Metrics.....	16
	Appendix A: Project Development Phases.....	18
Tables		
Table 1	Federal Agency Point(s)-of-Contact.....	8
Table 2	State Agency Point(s)-of-Contact.....	12
Figures		
Figure 1	Lease Area OCS-A 0539.....	2



Document Reference:

Revision Summary

Rev	Date	Prepared By	Checked By	Approved By
0	8/5/2022	Katherine Miller	Daniel Sieger	Katherine Miller
1	3/31/2023	Katherine Miller	Daniel Sieger	Katherine Miller



Abbreviations

BOEM	Bureau of Ocean Energy Management
CAA	Clean Air Act
COP	Construction and Operations Plan
COSW	Community Offshore Wind
CWA	Clean Water Act
DoD	Department of Defense
EA	Environmental Assessment
EIS	Environmental Impact Statement
ESA	Endangered Species Act
FAA	Federal Aviation Administration
FSN	Final Sale Notice
GARFO	Greater Atlantic Regional Fisheries Office
GW	Gigawatt
km	kilometers
KPIs	Key Performance Indicators
m	meters
MBTA	Migratory Bird Treaty Act
mi	miles
MLLW	mean lower low water
MMPA	Marine Mammal Protection Act
NEPA	National Environmental Policy Act
NHPA	National Historic Preservation Act
NHPC	National Historic Preservation Council
NJDEP	New Jersey Department of Environmental Protection
NJ HPO	New Jersey Historic Preservation Office
nm	nautical miles
NOAA	National Oceanic and Atmospheric Administration
NOI	Notice of Intent
NPS	National Park Service
NGV	National Grid Ventures
NYDOS	New York Department of State
NYSDEC	New York State Department of Environmental Conservation
NYSDOT	New York State Department of Transportation
NYSDPS	New York State Department of Public Service
NYSERDA	New York State Environmental Research and Development Authority
NYS OPRHP	New York State Office of Parks, Recreation, and Historic Preservation
O&M	Operations and Maintenance
OCLSA	Outer Continental Shelf Lands Act
PDE	Project Design Envelope



PSN	Proposed Sale Notice
RHA	Rivers and Harbors Act
ROD	Record of Decision
RWE	RWE Renewables
SAP	Site Assessment Plan
SHPO	State Historic Preservation Office
USACE	US Army Corps of Engineers
USCG	US Coast Guard
USEPA	US Environmental Protection Agency
USFWS	US Fish and Wildlife Service
WEA	Wind Energy Area



1 Introduction

Community Offshore Wind (COSW), a joint venture of RWE Renewables (RWE) and National Grid Ventures (NGV), proposes to develop the Community Offshore Wind Project (the COSW Project or Project), under the Bureau of Ocean Energy Management (BOEM) Commercial Lease of Submerged Lands for Renewable Energy Development on the Outer Continental Shelf (Lease Area OCS-A 0539; Lease Area). Lease Area OCS-A 0539 encompasses approximately 125,964 acres and is located approximately 37 miles (mi; 59 kilometers [km], 32 nautical miles [nm]) offshore of Little Egg Harbor, New Jersey and approximately 54 mi (104 km, 56 nm) offshore of Jones Beach, New York (see Figure 1, below). Water depths within the Lease Area range from 98 to 171 feet (30 to 52 meters [m]) mean lower low waters (MLLW).

COSW believes that coordination and engagement with federal, state, and local agencies (Agencies) is crucial to the success of an offshore wind project and is committed to an “early and often” approach to help ensure that the Project is developed in an environmentally, socially, and culturally sustainable manner to all stakeholders. As required in Lease OCS-A 0539, COSW has developed this Agency Communications Plan (Plan) which describes the strategies, tools, procedures, and protocols COSW will use to engage and communicate, share Project information, and solicit feedback from Agencies.

1.1 RWE Renewables and National Grid

COSW is a joint venture of RWE and NGV and is dedicated to providing clean energy, good local jobs, and building a network of trust in the communities it serves. RWE is a global leader in the development of offshore wind facilities, with 20 successful projects in the past two decades, while NGV brings expertise in renewable energy delivery systems in the northeast and internationally. Both organizations have ambitious objectives for achieving net zero emissions in the coming decades through innovations such as testing recyclable turbine blades and piloting green hydrogen, while generating sustainable economic opportunities for local communities.

RWE and NGV share a common goal of advancing an equitable clean energy future through the core principles of promoting health, safety, and care for the environment throughout the lifecycle of the project. This includes a commitment to continuous improvement and evolution by truly listening to stakeholders, integrating that feedback directly into the development and design of the Project, and becoming a standard-bearer for accountability and transparency.

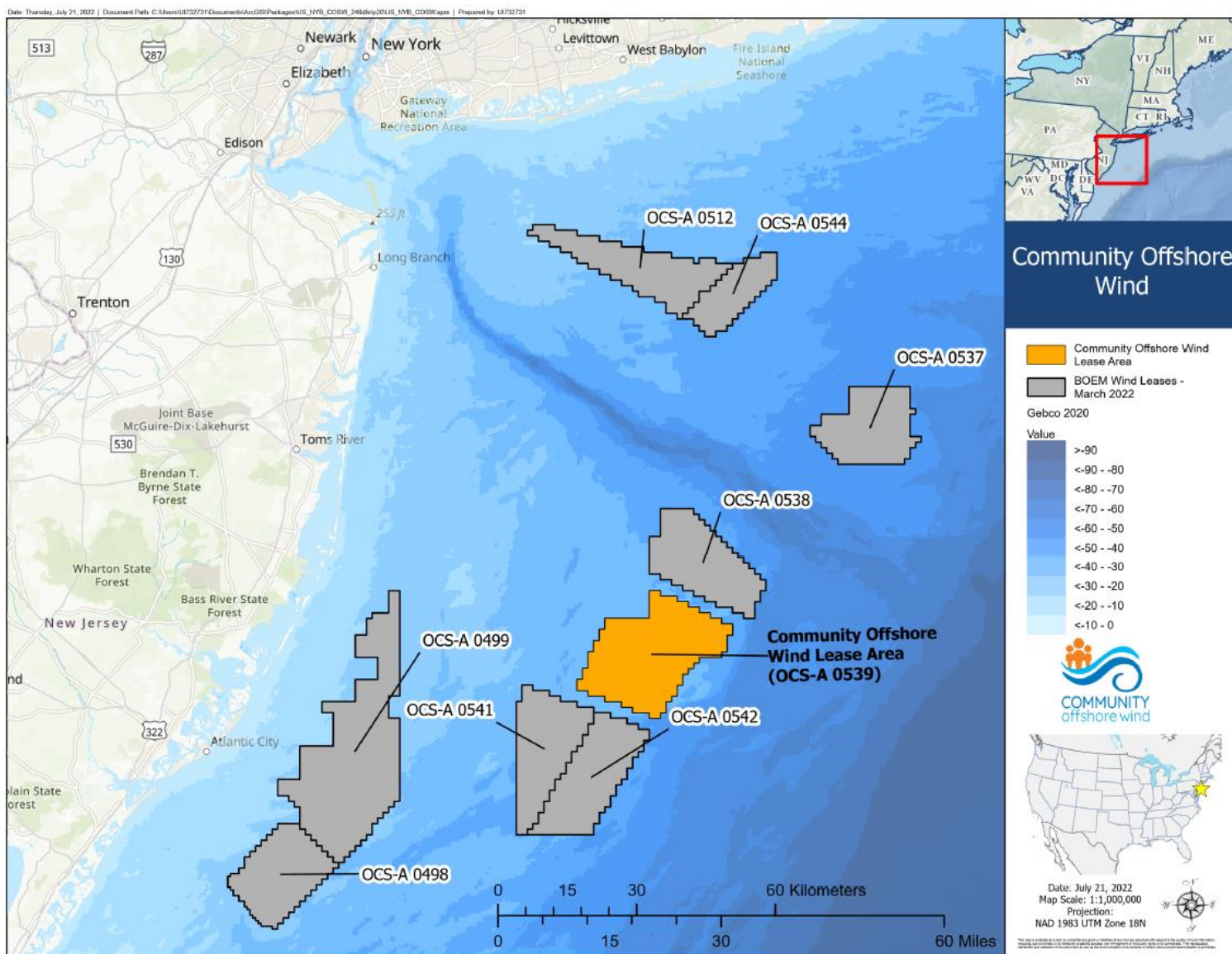


Figure 1 Lease Area OCS-A 0539

1.2 Project Team

COSW has assembled a strong team with experience that spans decades in developing, constructing, and operating large-scale infrastructure projects, including offshore wind. Information on and contact information for COSW's team can be found on our website: <https://communityoffshorewind.com/about>

For the purposes of this Plan, coordination and engagement with the Agencies will be led by COSW's Federal Permitting Project Manager and State Permitting Project Manager. Contact information, as well as the designated Main Point-of-Contact, is provided below.

Katherine Miller (Main Point-of-Contact)
Federal Permitting Project Manager
RWE Renewables Americas, LLC
100 Federal St., Suite 3303
Boston, MA 02110
Email: Katherine.Miller@rwe.com
Cell: 512-436-6708

Prescott Hartshorne
State Permitting Project Manager
National Grid Ventures
40 Sylvan Road
Waltham, MA 02451
Email: Prescott.Hartshorne@nationalgrid.com
Cell: 617-970-0283

As the Main Point-of-Contact, Katherine Miller will serve as the lead for all Project-related coordination and engagement. As the respective Federal Permitting Project Manager and State Permitting Project Manager, Katherine Miller and Prescott Hartshorne will lead the federal and state permitting efforts for the Project and serve as the main points-of-contact responsible for communicating Project permitting-related information to the Agencies from the various COSW teams. The Federal Permitting Project Manager and State Permitting Project Manager are responsible for implementation of all aspects of the Plan including, but not limited to, the following:

- Coordinating and leading engagement meetings;
- Tracking action items and follow-up engagements and activities;
- Providing regular updates to the Agencies; and
- Answering questions about the Project and its activities, and conversely, providing insight into Agency concerns, recommendations, and perspectives to the various COSW teams.

1.3 Authority, Regulations, and Lease Conditions

Lease OCS-A 0539 includes Lease Stipulation 3.1.2.3 Agency Communications Plan^{0F1}, which requires the lessee to develop a Plan. The Plan must be publicly available, describe the strategies that the lessee intends to use for communicating with Agencies with authority related to the Lease Area, and detail the methods proposed to engage with and provide information to the Agencies. As described in the Lease, the Plan must include:

- Detailed information and protocols for regular engagement with permitting and resource agencies including, but not limited to, the types of engagement activities (e.g., one-on-one meetings, interagency meetings, open information sharing meetings, etc.);
- The frequency of proposed engagements/meetings (e.g., monthly, quarterly, bi-annually, annually, etc.);
- The meeting locations and/or virtual platforms; and
- Contact information (e.g., telephone numbers, email addresses, etc.).

Throughout the development of the Project, COSW will comply with all Lease conditions, unless approval for a waiver is obtained from BOEM. In addition to the Lease, several statutory authorities and regulations intersect the Plan, directly or indirectly. These include, but are not limited to:

- Outer Continental Shelf Lands Act (OCSLA);
- National Environmental Policy Act (NEPA);
- Section 10 of the Rivers and Harbors Act (RHA);
- Sections 401 and 404 of the Clean Waters Act (CWA);
- Clean Air Act (CAA);
- Endangered Species Act (ESA);
- Magnuson-Stevens Fishery Conservation and Management Act (Magnuson-Stevens Act);
- Marine Mammal Protection Act (MMPA);
- Migratory Bird Treaty Act (MBTA);
- Section 106 of the National Historic Preservation Act (NHPA);
- Coastal Zone Management Act;
- Ports and Waterways Safety Act;
- CFR Title 33 Navigation and Navigable Waters;
- CFR Title 32 National Defense; and
- Federal Aviation Act.

In addition, several state regulations intersect the Plan, directly or indirectly. These include, but are not limited to:

- State of New York
 - Article VII of the New York Public Service Law;
 - New York State Historic Preservation Act of 1980;

¹ <https://www.boem.gov/renewable-energy/state-activities/lease-ocs-0539>

- Article 24, Freshwater Wetlands Act;
 - 6 NYCRR Part 182 (Endangered and Threatened Species);
 - New York Environmental Conservation Law Article 11 Section 535;
 - New York State Highway Law; and
 - New York State Public Lands Law.
- State of New Jersey
 - Wetlands Act of 1970;
 - Flood Hazard Area Control Act;
 - Freshwater Wetlands Protection Act;
 - New Jersey Water Pollution Control Act;
 - Tidelands Act;
 - New Jersey Green Acres Land Acquisition Act;
 - New Jersey Endangered Species Conservation Act;
 - New Jersey Register of Historic Places Act; and
 - NJ Soil Erosion and Sediment Control Act.

1.4 Guidance and Information Sources

Development of the Plan was informed by guidance and recommended best practices that include, but are not limited to, the following resources:

- 30 CFR 585;
- Lease OCS-A 0539;
- BOEM Decision Memorandum, New York Bight Final Sale Notice;
- New York Bight Final Environmental Assessment (OCS EIS/EA BOEM 2021-073), including Standard Operating Conditions, etc.;
- United States Department of the Interior Bureau of Ocean Energy Management Office of Renewable Energy Programs, “Information Guidelines for a Renewable Energy Construction and Operations Plan (COP) - Version 4.0,” 2020;
- United States Department of the Interior Bureau of Ocean Energy Management Office of Renewable Energy Programs, “Assessment of Seascape, Landscape, and Visual Impacts of Offshore Wind Energy Developments on the Outer Continental Shelf of the United States,” 2021;
- United States Department of the Interior Bureau of Ocean Energy Management Office of Renewable Energy Programs, “Guidelines for Providing Archaeological and Historic Property Information Pursuant to 30 CFR Part 585,” 2017;
- United States Department of the Interior Bureau of Ocean Energy Management Office of Renewable Energy Programs, “Guidelines for Providing Benthic Habitat Survey Information for Renewable Energy Development on the Atlantic Outer Continental Shelf Pursuant to 30 CFR Part 585,” 2019;
- Greater Atlantic Regional Fisheries Office, “Essential Fish Habitat Assessment for Consultations - Guidelines for completing an EFH assessment,” National Oceanographic and Atmospheric Administration (NOAA), 19 August 2021; and

- United States Department of the Interior Bureau of Ocean Energy Management Office of Renewable Energy Programs, “Guidelines for Providing Geophysical, Geotechnical, and Geohazard Information Pursuant to 30 CFR Part 585,” 2020.

This Plan is intended to be adaptive to changing conditions and Agency needs and is expected to improve over time as feedback is incorporated and the Project matures.

2 Agency Communication Principles and Objectives

The principal objective of this Plan is to develop a respectful and collaborative relationship between COSW and the Agencies. COSW believes that early, often, and meaningful engagement is critical to developing a working relationship between lessees and the Agencies that is based on trust and mutual understanding. The following principles guide the development, implementation, and future modifications of the Plan, and reflect the core values and philosophy of COSW:

- **Safety:** Promote the safety of ocean users, coastal communities, other stakeholders, and Project crews, from Project design through implementation.
- **Respect:** Build trust through respect for the local knowledge, expertise, and concerns of stakeholders.
- **Understanding:** Develop a detailed understanding of the environmental, social, and cultural resources and uses in the area to inform the successful development of the Project.
- **Transparency:** Promote transparency through timely two-way communication strategies that incorporate clear feedback mechanisms and are responsive to Agency communication preferences.
- **Efficiency:** Ensure communication and outreach activities are coordinated to achieve efficient communications at the appropriate cadence for all stakeholder groups.
- **Equity:** Ensure engagement efforts are comprehensive across Agencies, stakeholders, and communities, including underserved and non-traditional constituents.
- **Adaptability:** Respond to changing needs and circumstances as opportunities to adapt and improve communication methods and strategies.
- **Collaboration:** Build a sustainable shared future for offshore wind through collaboration and inclusivity that is robust to climate change.

COSW’s goal is to proactively ensure that all stakeholders are informed of the Project and have many opportunities for communication and input throughout the various phases of the Project. The communication strategies detailed throughout this Plan are built on the Project’s core communication principles. These approaches are intended to be specific and adaptable to the needs of each Agency and promote effective, two-way engagement that contributes to the safe, successful, and sustainable development of the Lease Area. This Plan is considered a “living” document, and will be updated regularly, as the Project and communication strategies evolve. Revised versions will be provided to the Agencies once available and posted on the COSW website.

3 Agency Communications Strategy

COSW recognizes that Agency time is valuable and wants to strive for meaningful communication, coordination, and collaboration without being overly burdensome. COSW also recognizes that various phases in the Project development process will require different levels of engagement, with

fewer engagement activities during periods of relatively low activity and more engagement activities during periods of increased activity or when COSW is making important Project decisions. As a result, the types and frequency of engagement activities will be tailored to the specific needs of each phase of Project development:

- Site Assessment/Characterization and Project Development;
- Construction and Operations Plan (COP) Development and Submittal;
- Environmental and Technical Review;
- Construction;
- Operation and Maintenance (O&M); and
- Decommissioning.

Details on the activities proposed to occur during each phase of Project development, along with COSW's goals and objectives, are provided in Appendix A.

In support of Agency engagement, COSW has scheduled a bi-annual inter-agency virtual meeting, in which a Project update will be provided, as well as an opportunity to answer any questions and solicit feedback. In addition to the bi-annual inter-agency meeting, COSW intends on scheduling regular coordination and engagement meetings with the Agencies to discuss applicable area(s) of interest, in addition to as-needed meetings to allow for further discussion or a working session to resolve conflicts or issues that may arise throughout the process. All meetings will be held virtually, unless otherwise requested by the Agency.

4 Agency Identification

COSW has identified a preliminary set of Agencies that are anticipated to support the development, consultations, and permitting of an offshore wind farm project. In addition to federal agencies, COSW anticipates coordinating with New York and New Jersey state agencies. At this stage of the Project, the location(s) of the onshore portions of the Project are still under development, therefore some state and local agencies have not been identified. This Plan will be updated to include the applicable agencies and their preferred means of communication as Project decisions are made. At any time, an Agency may request to change the frequency and method of participation or choose to not participate in the Plan; this will not change the regulatory authority of the Agency.

COSW recognizes that there may be additional Agencies identified within the Fisheries Communications Plan and the Native American Tribal Communications Plan that are not included within Table 1, below. COSW also recognizes that the development of an offshore wind project requires input from many stakeholders with various interests. While these stakeholders may not be included within this Plan, their input will be noted and taken into consideration. A summary of all stakeholder interactions will be provided in COSW's Progress Reports, as required under Lease Stipulation 3.1.

COSW also recognizes the importance of equity and inclusivity in stakeholder identification and engagement, particularly for Environmental Justice communities, who face challenges that often prevent full participation in public processes. This Plan seeks to improve Project awareness and identification of underserved communities so that outreach activities can be tailored to address their specific barriers to engagement. The intent is to build an engagement network and approaches that

are comprehensive across stakeholder groups and promote participation by non-traditional stakeholders and others who may not typically be involved in these processes.

4.1 Federal Agencies

COSW anticipates that many federal agencies will participate in the development and permitting of this Project. A preliminary set of federal agencies from which authorizations and/or consultations will be required are included below, with the designated point(s) of contact provided in Table 1. As the Project continues to develop, and the Project area refined, additional agencies and points of contact may be identified and included within this Plan.

Table 1 Federal Agency Point(s)-of-Contact

Agency	Contact Information
Bureau of Ocean Energy Management (BOEM)	Whitney Hauer Project Coordinator Email: whitney.hauer@boem.gov Cell: 571-536-8698
US Army Corps of Engineers (USACE)	<p>Stephan A. Ryba Chief, Regulatory Branch NY District U.S. Army Corps of Engineers 26 Federal Plaza, Room 16-406 New York, NY 10278 Phone: 917-790-8512 Fax: 212-264-4260 Email: stephan.a.ryba@usace.army.mil</p> <p>Todd A. Schaible Chief, Regulatory Branch Philadelphia District U.S. Army Corps of Engineers 100 Penn Square East, Wanamaker Building Philadelphia, PA 19107 Phone: 215-656-6725 Fax: 215-656-6724 Email: todd.a.schaible@usace.army.mil</p>
National Oceanic and Atmospheric Administration Fisheries (NOAA Fisheries)	Susan Tuxbury (Wind Team Lead) Greater Atlantic Regional Fisheries Office Habitat and Ecosystem Services Division Ecosystem Management Branch Office: (978) 281-9176 Email: susan.tuxbury@noaa.gov

Agency	Contact Information
	<p>Jaclyn Daly (MMPA Lead) National Marine Fisheries Service Office of Protected Resources 1315 East-West Highway Silver Spring, Maryland 20910 phone: 301-427-8438 Email: Jaclyn.daly@noaa.gov</p> <p>Julie Crocker (ESA Consultation Lead) ESA Fish, Ecosystems and Energy Branch Chief Greater Atlantic Regional Fisheries Office Protected Resources Division ESA Fish, Ecosystems and Energy Branch Office: (978) 282-8480 Email: julie.crocker@noaa.gov</p> <p>Keith Hanson (EFH Consultation Lead) Marine Habitat Resource Specialist Greater Atlantic Regional Fisheries Office Habitat and Ecosystem Services Division Mid-Atlantic Habitat Conservation Branch Office: (410) 267-5650 Email: keith.hanson@noaa.gov</p> <p>Doug Christel (Fisheries Lead) Fishery Policy Analyst Greater Atlantic Regional Fisheries Office Habitat and Ecosystem Services Division Ecosystem Management Branch Offshore Wind Office: (978) 281-9141 Email: Douglas.Christel@noaa.gov</p> <p>Andy Lipsky (Northeast Fisheries Science Center Wind Lead) Fisheries & Offshore Wind Lead Northeast Fisheries Science Center Directorate Email: andrew.lipsky@noaa.gov</p>
US Environmental Protection Agency (USEPA)	<p>Viorica Petriman Air Programs Branch, Permitting Section U.S. Environmental Protection Agency, Region 2 290 Broadway, New York, New York 10007 Cell: (212) 637-4021 Email: petriman.viorica@epa.gov</p>
US Fish and Wildlife Service (USFWS)	<p>Stephanie Vail-Muse Email: Stephanie.Vail-Muse@fws.gov</p>

Agency	Contact Information
US Coast Guard (USCG)	Michelle DesAutels Email: Michele.E.DesAutels@uscg.mil Elizabeth Marshall Email : Elizabeth.J.Marshall@uscg.com Matthew Creelman Email : Matthew.K.Creelman2@uscg.com
Department of Defense (DoD)	Steve Sample Email: Steve.sample@acq.osd.mil
National Parks Service (NPS)	Mary Kruger Cell: 617-223-5066 Email: mary_c_krueger@nps.gov
Federal Aviation Administration (FAA)	Sheri Edgett-Baron Cell: 202-267-9354 Email: sheri.edgett-baron@faa.gov

4.1.1 Bureau of Ocean Energy Management

The Bureau of Ocean Energy Management (BOEM) has jurisdiction under the Outer Continental Shelf Lands Act (OCSLA). The OCSLA gives BOEM the jurisdiction to issue leases (ex. Lease OCS-A 0539) and right-of-way grants for the development of renewable energy. BOEM will also be the lead federal agency, in charge of leading the National Environmental Policy Act (NEPA) review for the Project's Construction and Operations Plan (COP).

4.1.2 US Army Corps of Engineers

The US Army Corps of Engineers (USACE) has jurisdiction under Section 10 of the Rivers and Harbors Act (RHA) and Section 404 of the Clean Water Act (CWA). Section 10 of the RHA requires a permit for activities that involve the construction of structures or obstructions in navigable waters. Section 404 of the CWA requires a federal permit for activities that involve the discharge of dredged or fill materials into navigable waters of the US. The USACE also has jurisdiction under Section 14 of the RHA, which has since been amended and is codified at 33 USC 408 (Section 408). Section 408 authorization is required when the proposed project may use or alter a Civil Works project (ex. USACE maintained channels).

4.1.3 National Oceanic and Atmospheric Administration

The National Oceanic and Atmospheric Administration Fisheries (NOAA Fisheries) has jurisdiction under the Endangered Species Act (ESA), Magnuson-Stevens Fishery Conservation and Management Act (Magnuson-Stevens Act), and the Marine Mammal Protection Act (MMPA). Section 7 of the ESA requires consultation to assess the impacts of the Project on ESA-listed species and designated Critical Habitat and prohibits the “take” (to harass, harm, pursue, hunt, shoot, wound, kill, trap,

capture, or collect, or to attempt to engage in any such conduct) of ESA-listed species. The Magnuson-Stevens Act requires an Essential Fish Habitat (EFH) Assessment consultation to assess the impacts to designed EFH. The MMPA prohibits the “take” (to harass, hunt, capture, or kill, or attempt to harass, hunt, capture, or kill any marine mammal) of marine mammals, including from acoustic harassment.

4.1.4 US Environmental Protection Agency

The US Environmental Protection Agency (USEPA) has jurisdiction under the Clean Air Act (CAA). Section 328(a) of the CAA requires the USEPA establish air pollution control requirements on the OCS. An OCS Air Permit will likely be required to comply with the USEPA’s requirements under the CAA.

4.1.5 US Fish and Wildlife Service

The US Fish and Wildlife Service (USFWS) has jurisdiction under the Endangered Species Act (ESA) and Migratory Bird Treaty Act (MBTA). Section 7 of the ESA requires consultation to assess the impacts of the Project on ESA-listed species and designated Critical Habitat. The MBTA prohibits the “take” (including killing, capturing, selling, trading, and transport) of protected migratory bird species.

4.1.6 US Coast Guard

The US Coast Guard (USCG) has jurisdiction under maritime traffic and national security out to 12 nm from shore. Part of the USCG responsibilities include issuing permits for Private Aids to Navigation (PATON), for the placement of temporarily or permanently fixed structure, such as buoys and foundations. The USCG also issues Local Notice to Mariners (LNM), which provides weekly updates to the mariner community on activities occurring offshore.

4.1.7 Department of Defense

The Department of Defense (DoD) will be consulted with through the DoD Clearinghouse throughout the lifetime of the Project, to ensure that Project activities will not impact or be impacted by the DoD.

4.1.8 National Parks Service

The National Parks Service (NPS) serves as the agency which oversees the care of the National Parks. As Lease OCS-A 0539 is approximately 54 miles from the Gateway National Recreation Area and 58 miles from the Fire Island National Seashore, the closest NPS Parks to the Lease Area, COSW does not anticipate the Project will be visible. Therefore, COSW recommends providing annual email updates to NPS, with the option for a virtual meeting, to provide Project updates.

4.1.9 Federal Aviation Administration

The Federal Aviation Administration (FAA) has jurisdiction over U.S. territorial airspace (12 nm offshore). Authorization in the form of a Determination of No Hazard from the FAA is required for activities that occur over 200 feet in height within U.S. territorial airspace.

4.1.10 Advisory Council on Historic Preservation

The Advisory Council on Historic Preservation (ACHP) serves as the agency which oversees the federal review process of Section 106 of the National Historic Preservation Act (NHPA). As the lead

federal agency, BOEM will consult under Section 106 of the NHPA with the State Historic Preservation Offices (SHPOs), Tribal Historic Preservation Offices (THPOs), the ACHP, and other stakeholders to assess impacts to historical and cultural resources.

COSW does not anticipate consulting with the ACHP, but rather with BOEM, the SHPOs, THPOs, and other stakeholders, to fulfil the requirements under Section 106 of NHPA.

4.2 State Agencies

COSW anticipates that many state agencies will participate in the development and permitting of this Project. As the onshore portion of the Project is still under development, a preliminary list of state agencies in which authorizations and/or consultations are likely to be required are included below, with the designated point(s) of contact provided in Table 2. As the Project continues to develop, and the onshore portions of the Project identified, additional agencies and points of contacts will be identified and included within this Plan.

Table 2 State Agency Point(s)-of-Contact

Agency	Contact Information
State of New York	
New York Department of State (NYDOS)	Laura McLean New York Department of State Email: Laura.mclean@dos.state.ny.us Cell: 315-235-0351 Jennifer Street New York Department of State Email : Jennifer.Street@dos.ny.gov Cell : 518-474-7247
New York State Department of Environmental Conservation (NYSDEC)	Karen Gaidasz Offshore Wind and Hydroelectric Section Chief Bureau of Energy Project Management New York State Department of Environmental Conservation Division of Environmental Permits 625 Broadway, 4th Floor Albany, NY 12233-1750 Cell: 518-402-9153 Fax: 518-402-9168 Email: karen.gaidasz@dec.ny.gov
New York State Department of Public Services (NYS DPS)	Jeremy D. Flaum Office Electric, Gas and Water Department of Public Service 3 Empire State Plaza, Albany, NY 12223 Email: jeremy.flaum@dps.ny.gov Cell: (518) 486-2219

Agency	Contact Information
	<p>Jason Zehr Environmental Certification and Compliance Section Chief Department of Public Service 3 Empire State Plaza, Albany, NY 12223 Email: Jason.Zehr@dps.ny.gov Cell: (518) 486-2464</p> <p>Heather Behnke Office of General Counsel Department of Public Service 3 Empire State Plaza, Albany, NY 12223 Email: Heather.Behnke@dps.ny.gov Cell: (518) 474-5474</p>
New York State Office of Parks, Recreation, and Historic Properties (NYS OPRHP)	<p>Tim Lloyd Email: Timothy.Lloyd@parks.ny.gov</p>
New York State Department of Transportation (NYS DOT)	<p>Kari Gathen Associate Attorney, Office of Legal Services New York State Department of Transportation 50 Wolf Road Albany, New York 12232 Cell: 518-457-2411 Email: kari.gathen@dot.ny.gov</p> <p>Thomas McIntyre Assistant Commissioner for Regional Operations New York State Department of Transportation 50 Wolf Road Albany, New York 12232 Email: thomas.mcintyre@dot.ny.gov</p>
State of New Jersey	
New Jersey Department of Environmental Protection (NJDEP)	<p>Elizabeth Lange Environmental Specialist 2 Office of Permitting and Project Navigation New Jersey Department of Environmental Protection 401 East State Street Trenton, NJ 08625-0420 Office: (609) 292-3600 Direct: (609) 633-2005 Email : Elizabeth.Lange@dep.nj.gov</p> <p>Katie Nolan Office of Permitting and Project Navigation New Jersey Department of Environmental Protection 401 East State Street Trenton, NJ 08625-0420 Email: Katherine.nolan@dep.nj.gov</p>

Agency	Contact Information
New Jersey Historic Preservation Office (NJ HPO)	<p>Jesse West-Rosenthal, Ph.D. (Meeting Coordination) Historic Preservation Specialist 2 Historic Preservation Office NJ Department of Environmental Protection 501 East State Street, Trenton, NJ 08625 Email: jesse.west-rosenthal@dep.nj.gov Cell: (609) 984-6019</p> <p>Jennifer Leynes Historic Preservation Office NJ Department of Environmental Protection 501 East State Street, Trenton, NJ 08625 Email: jennifer.leynes@dep.nj.gov</p> <p>Kate Marcoul (Official Documentation Submittals) Deputy State Historic Preservation Officer Historic Preservation Office NJ Department of Environmental Protection 501 East State Street, Trenton, NJ 08625 Email: kate.marcoul@dep.nj.gov</p>

4.2.1 New York

New York State has jurisdiction over territorial waters within three nm of shore and any onshore activities, such as landfalls and onshore facilities. At this stage of the Project, the location(s) of the onshore portions of the Project are still under development, therefore the engagement proposed with the New York State agencies listed below is based on the offshore (federal) portions of the Project. As the onshore portions of the Project become known, COSW will work with the New York State Agencies to update the frequency of engagement, based on Project phase.

New York Department of State

The New York Department of State (NYDOS) is in charge of enforcing the states Coastal Management Program under the federal Coastal Zone Management Act.

New York State Department of Environmental Conservation

The New York State Department of Environmental Conservation (NYSDEC) has jurisdiction under the New York State Environmental Conservation Law (ECL) and is responsible for protecting the public health and safety.

New York State Department of Public Service

The New York State Department of Public Services (NYS DPS) has jurisdiction under New York Public Service Law (NYPSL) and is the lead state agency in charge of the NYPSL Article VII process.

New York State Office of Parks, Recreation, and Historic Properties

The New York State Office of Parks, Recreation, and Historic Properties (NYS OPRHP) is charged with maintaining the state parks and historic sites within New York. The NYS SHPO is also under NYS OPRHP.

New York State Department of Transportation

The New York State Department of Transportation (NYS DOT) serves as the agency which oversees highways, railroads, mass transit systems, ports, waterways, and aviation facilities in the State of New York.

4.2.2 New Jersey

The State of New Jersey has jurisdiction over territorial waters within three nm of shore and any onshore activities, such as landfalls and onshore facilities. At this stage of the Project, the location(s) of the onshore portions of the Project are still under development, therefore the engagement proposed with the State of New Jersey agencies listed below is based on the offshore (federal) portions of the Project. As the onshore portions of the Project become known, COSW will work with the State of New Jersey Agencies to update the frequency of engagement, based on Project phase.

New Jersey Department of Environmental Protection

The New Jersey Department of Environmental Protection (NJDEP) has jurisdiction under New Jersey Administrative Code (NJAC).

New Jersey Historic Preservation Office

The New Jersey Historic Preservation Office (NJ HPO) falls under the NJDEP and is the SHPO.

5 Communications Tracking

This Plan will include a detailed spreadsheet that will track the engagement efforts with the Agencies. Engagement opportunities will be documented by Agency, engagement type, discussion topics, and feedback/input provided. COSW will detail how that input has been communicated and integrated into the overall planning of the Project. This document will improve transparency and illustrate the variety of engagement strategies planned. Additionally, the Project is developing a stakeholder engagement management system to record efforts across all communications plans and track stakeholder concerns and requests. This will facilitate the development of the semi-annual progress reports, as required in Lease Stipulation 3.1.

6 Opportunities for Coordination

COSW understands that the Agencies are coordinating with many leaseholders on numerous existing and future offshore wind projects, and that this is placing a significant burden on Agency resources and staff capacity. As a result, BOEM is requiring lessees coordinate, to the extent practicable, with one another on their engagement activities.

COSW has begun to engage with other New York Bight lessees to identify and explore opportunities to combine or coordinate engagement activities, such as regional research and monitoring efforts, as well as information and data sharing. COSW also actively participates in regional groups, including

the NYSERDA Technical Working Groups and the Regional Wildlife Science Collaborative, alongside other leaseholders.

COSW will also solicit feedback and recommendations from the Agencies on how best to coordinate lessee engagement throughout the lifetime of the Project. Prior to establishing any joint engagement activities or protocols, COSW will share proposals for coordinated engagement activities.

Information on how COSW intends to coordinate with other stakeholders, such as Tribes and fisheries, can be found on the Native American Tribal Communications Plan and Fisheries Communications Plan, respectively: <https://communityoffshorewind.com/>

7 Conflict Prevention and Resolution

The intent of the Plan is for COSW to maintain an open line of communication with the Agencies and to ensure and “early and often” approach to outreach. Through this engagement, COSW hopes to collaboratively identify potential impacts from the Project, and where those impacts cannot be avoided, engage in a bottom-up process to develop approaches to minimize, and reduce, and eliminate those impacts, where feasible.

In recognition that it may not be possible to avoid all conflicts, the Project will develop a conflict resolution process. The intent is to provide the Agencies opportunities to notify the Project of previously unknown conflicts and concerns and provide suggestions for resolution.

8 Indicators and Metrics

Key performance indicators (KPIs) are a set of quantifiable measurements or metrics used to gauge a company or organization’s overall, long-term performance in implementing a plan or program. In the context of this Plan, KPIs will be used to track COSW’s performance in conducting/completing the engagement activities outlined in this plan. The team will collaborate with the Agencies to seek early feedback on the KPI’s to be incorporated into this Plan, however, at a minimum will contain:

- Number of engagement activities proposed over a pre-defined period of time;
- Number of engagement activities held over a pre-defined period of time;
- Average time allowed to review pre-read materials;
- Average time allowed to provide post-engagement summaries;
- Number of action items identified and defined response period; and
- Number of action items resolved within pre-defined response period.

The final set of KPI’s, as discussed with the Agencies, will be described in future versions of this Plan, with updates included in the BOEM required progress reporting². COSW will share a copy of the KPI’s

² BOEM reporting requirements can be found in Addendum C, Section 3.0 of the Commercial Lease for OCS-A 0539 available at https://www.boem.gov/sites/default/files/documents/renewable-energy/state-activities/Lease%20OCS-A%200539_0.pdf.

on an annual basis to allow COSW and the Agencies to evaluate implementation of and identify clear ways to continuously improve the Plan.

APPENDICES

Appendix A: Project Development Phases

Appendix A Project Development Phases

A.1 Site Assessment/Characterization and Project Development

During this initial phase, COSW will develop strategies and plans for site assessment and characterization activities, such as geophysical (side scan sonar, sub bottom profiler, etc.) and geotechnical (coring) surveys (G&G surveys), benthic (grab samples, video tows) surveys, other offshore surveys (marine mammals, avian species, fish species), and terrestrial surveys (vegetation, wildlife, and cultural). As required in Lease Stipulation 2.1, COSW will submit a Survey Plan in support of each physical, biological, or cultural resource survey to BOEM. A copy of the Survey Plan will also be submitted to the applicable Agencies, as appropriate, for review and recommendations, prior to initiating any survey activities.

A site assessment plan (SAP) may also be submitted to BOEM, in support of the installation of metocean buoys within the Lease Area to collect meteorological information. COSW will also coordinate with the applicable Agencies to obtain the necessary authorizations and approvals prior to deploying metocean buoys.

As the information collected during this phase is analyzed, COSW will also begin to develop the Project, including the location for the export cable corridors, landfall, and onshore facilities. COSW will provide regular updates to the Agencies on the proposed location of the Project and seek feedback and recommendations on potential alternatives that could reduce impacts to and/or de-conflict with environmental, social, and/or cultural resources. In addition to these regular updates, the COSW Fisheries Team will also be actively engaging with staff within state and federal Agencies (See Fisheries Communication Plan for more details).

The principal engagement goals during this phase include, but are not limited to, the following:

- COSW to provide the Agencies with opportunities to review and comment on proposed site characterization survey and study plans, COSW's Site Assessment Plan (SAP), and Project development;
- Agencies to communicate their concerns, information requests, and recommendations to COSW to inform methods and objectives of site characterization surveys and studies and Project development;
- COSW and their site characterization survey and study contractors to coordinate with stakeholders on study activities;
- COSW and Agencies will discuss opportunities for collaboration during site characterization studies and surveys; and
- COSW to communicate the findings of the various site characterization surveys and studies to the Agencies and Project development.

A.2 Construction and Operations Plan (COP) Development

During this phase, COSW will continue to analyze and review information collected during the Site Assessment Phase to develop the Project's COP. The COP describes how COSW will construct and operate a commercial wind project on Lease Area OCS-A 0539 and includes a description of all planned facilities, as well as a description of proposed construction activities (the Project Design

Envelope [PDE]), commercial operations, and conceptual decommissioning plans. The COP also summarizes results of the site assessment phase biological, geotechnical, socioeconomic, and cultural resources studies; provides an assessment of the Project's potential impacts; and COSW's proposed measures for avoiding, minimizing, reducing, eliminating, mitigating, and monitoring impacts.

The principal engagement goals during this phase include, but are not limited to, the following:

- COSW to provide the Agencies an opportunity to review and comment on the draft results of the studies conducted in support of the COP, as well as the Project's potential impacts on environmental, social, economic, and cultural resources;
- COSW to provide the Agencies with updates during the development of the PDE for the Project and solicit feedback and recommendations; and
- COSW will collaborate with the Agencies to incorporate their opinions, concerns, and recommendations into proposed measures to avoid, minimize, reduce, eliminate, and/or monitor Project impacts to environmental, social, and/or cultural resources, to the extent practicable.

A.3 Environmental and Technical Review

This phase will begin when COSW submits the COP to BOEM. Once the COP is deemed sufficient and complete, BOEM will issue a Notice of Intent (NOI) to prepare an Environmental Impact Statement (EIS) to conduct its National Environmental Policy Act (NEPA) environmental and technical reviews. At the conclusion of the two (2) year NEPA review period, BOEM will decide whether to approve, approve with modifications, or disapprove the COP. BOEM's decision will be presented in a Record of Decision (ROD) to complete the NEPA review.

During this time, COSW will also develop and submit application package submittals in support of other Agency authorizations and approvals. COSW will provide regular updates to the Agencies and seek feedback and recommendations on the application through pre-application meetings.

The principal engagement goals during this phase include, but are not limited to, the following:

- COSW to provide the Agencies an opportunity to review and comment on the draft application package submittals;
- COSW will regularly communicate with the Agencies to provide updates on COSW activities in support of environmental and technical reviews; and
- COSW will respond to questions or information requests from Agencies and communicate responses and/or the requested information in timely manner.

A.4 Construction

During this phase, COSW will construct the proposed offshore wind farm within the Lease Area. Construction activities will be aligned with the requirements and conditions of the issued permits. COSW anticipates it will take two to three (2-3) years to construct the proposed Project.

The principal engagement goals during this phase will include, but are not limited to, the following:

- COSW will communicate regular Project construction updates and the status of the various permit conditions through construction;
- COSW will coordinate with stakeholders on construction vessel movements and construction activities;
- Coordinate the mitigation and monitoring programs as defined in the issued permits and/or any other agreements COSW has committed to; and
- Regularly communicate the results of construction phase environmental, social, and cultural resource monitoring reports.

A.5 Operation and Maintenance (O&M)

During the O&M phase, COSW will operate and perform routine maintenance on their offshore wind farm within the Lease Area. The initial operations term for the Lease Area is 33 years^{2F3}.

The principal engagement goals during this phase include, but are not limited to, the following:

- COSW will communicate regular O&M updates;
- COSW will coordinate and collaborate the review of O&M phase environmental, socio-economic, and cultural resources monitoring reports; and
- COSW would coordinate with stakeholders on scheduled O&M activities and vessel movements.

A.6 Decommissioning

At the end of the Project's life, COSW will submit a decommissioning application to BOEM and any other applicable Agency. Once approved, COSW would decommission and remove its Project components. COSW anticipates this process would take two to four (2-4) years to complete.

The principal engagement goals during this phase include, but are not limited to, the following:

- COSW will collaborate with the Agencies to develop a decommissioning plan that minimizes environmental, social, and/or cultural impacts to the greatest extent practicable;
- COSW will communicate regular decommissioning planning updates and, during decommissioning activities, provide updates on the status/progress of decommissioning works and any required environmental, social, and/or cultural resources monitoring programs; and
- COSW will coordinate with stakeholders on scheduled decommissioning activities and associated vessel activities to areas.

³ Community Offshore Wind may elect to request an extension to the Operations Term from BOEM, as allowed under 30 CFR § 585.425.